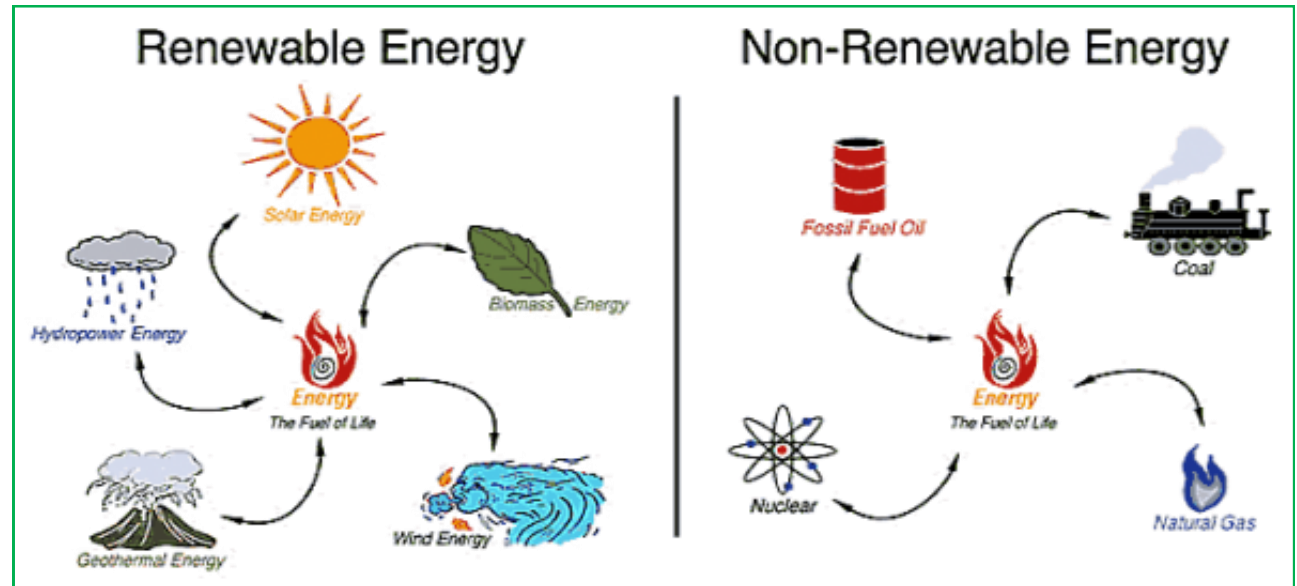

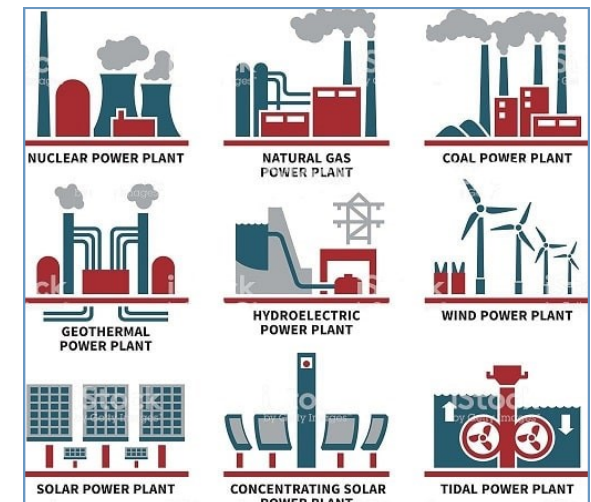
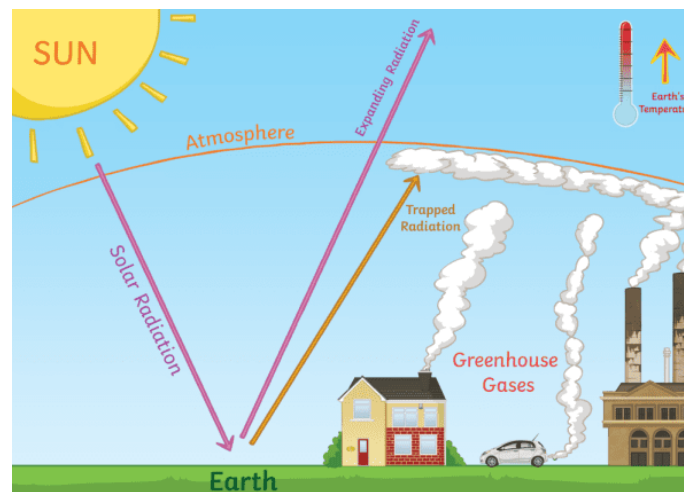


<b>Climate change</b>	Climate is the average weather in a place over many years. Climate change is a shift in those average conditions.
<b>Greenhouse Effect</b>	A process that occurs when gases in Earth's atmosphere trap the Sun's heat. This process makes Earth much warmer.
<b>Fossil Fuels</b>	Naturally occurring sources of fuel — Gas, coal and oil. These are <b>non-renewable</b> , they can not be replaced once we use them
<b>Renewable Energy</b>	Renewable energy is created by resources that nature can replace, such as wind, water and sunlight.
<b>Carbon Footprint</b>	A carbon footprint is the total greenhouse gas emissions caused by an individual, event, organisation, service, place or product,
<b>Food Miles</b>	The distance an item has travelled from where it was produced to where it was consumed
<b>Import</b>	Buying products and goods from abroad.
<b>Export</b>	Selling and transporting products and goods abroad.
<b>Valuable natural resources</b>	Materials that we obtain naturally from the earth such as iron, copper, aluminum and salt.



**Y5/6 Term 2 Knowledge Organiser**  
**Climate change and Climate Actions**  
**What Were You Thinking?**



**Greta Thunberg**

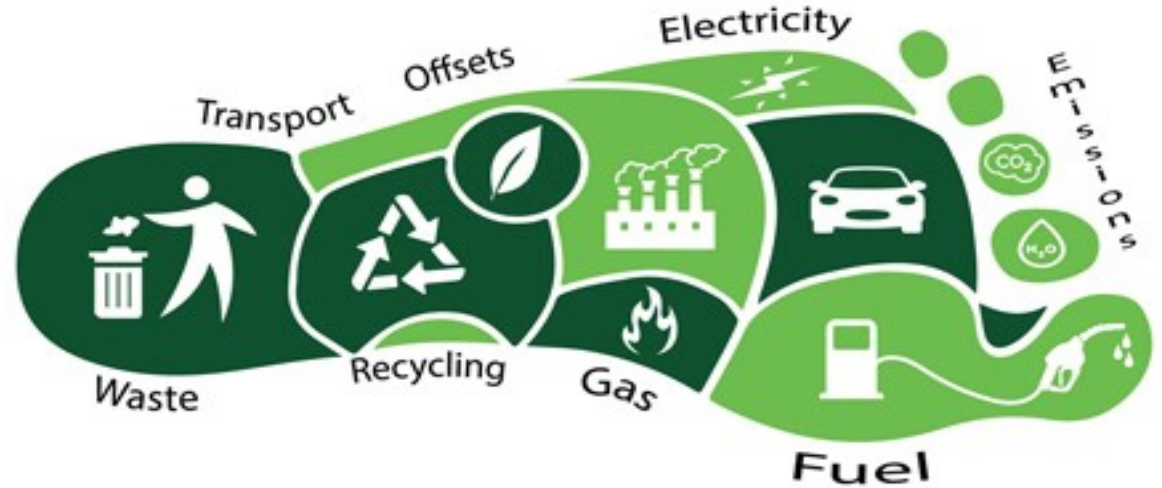
A Swedish environmental activist who is known for challenging world leaders to take immediate action for climate change



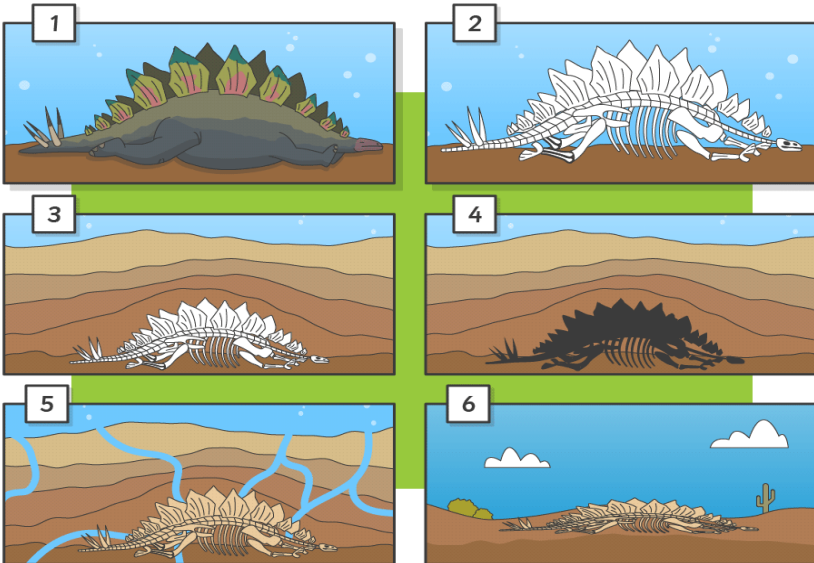
**Mary Anning**

An English fossil collector, dealer, and palaeontologist who became known around the world for finds she made on the English Coast

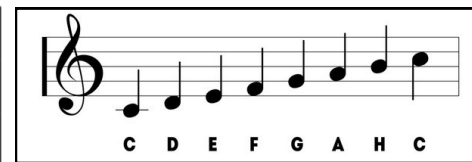
<https://www.carbonfootprint.com/calculator.aspx>



How fossils are formed:



Term	Symbol	Value
semibreve		4 beats
minim		2 beats
crotchet		1 beat
quaver		1/2 beat
pair of quavers		1/2 + 1/2 = 1



Impressionist music  
Baroque Music  
Russian Romantic Music

**Useful Websites:**

<https://www.bbc.co.uk/bitesize/articles/z4g3f82>

<https://www.wwf.org.uk/get-involved/schools/cop26>

<https://www.bbc.co.uk/newsround/51372486>

<https://www.natgeokids.com/uk/discover/science/nature/what-is-cop26-glasgow/>