



Y5/6 KNOWLEDGE ORGANISER. Autumn 2021

PROJECT: **What Were You Thinking?** We will be studying Evolution, adaptation and inheritance and the people who have challenged what we thought we knew.

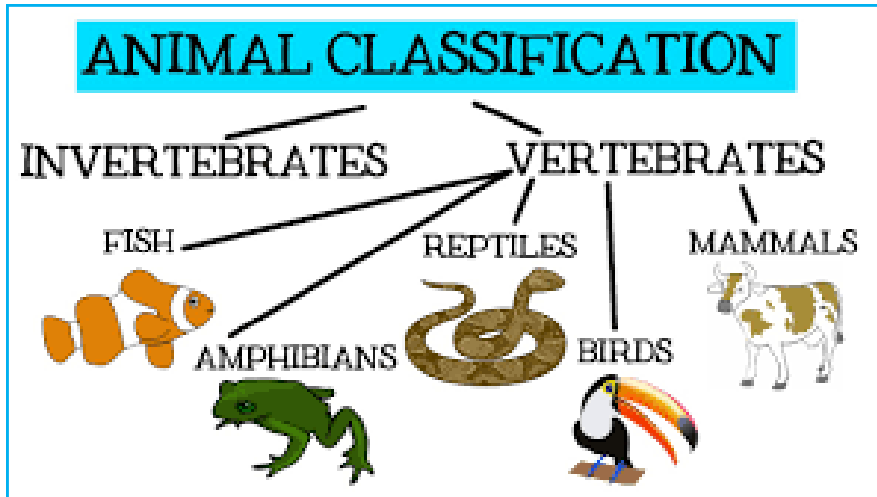
USEFUL LINKS FOR INDEPENDENT RESEARCH

<https://www.bbc.co.uk/bitesize/topics/zvhhvcw>

<https://www.youtube.com/watch?v=jS6JMI0AP0A>

<https://www.youtube.com/watch?v=vbKpu8QTn5I>

<https://www.bbc.co.uk/teach/class-clips-video/ks2-charles-darwin-victorian-science/zddbndr>



Charles Darwin (February 12, 1809 - April 19, 1882)

An English naturalist and geologist, best known for his contributions to evolutionary theory



Carl Linnaeus (23 May 1707 - 10 January 1778)

A Swedish naturalist famous for his work in Taxonomy: the science of identifying, naming and classifying organisms,

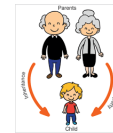
Evolution

Change in the genetics of a species from generation to generation by such processes as mutation and natural selection.



Inheritance

The genetic characters passed on from parent to offspring.



A descendant, the produce of parents.



Offspring

Adaptation

Any change in the structure or behaviour of a species which helps it to become better fitted to survive and reproduce in its environment.



Adapted to Warm Environments

Camels



Fennec Fox



Kangaroo



Penguin



Seal



Polar Bear



Adapted to Cold Environments



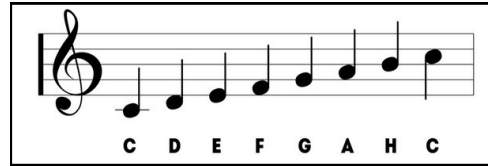
Crockerne Church of England Primary School Knowledge Organiser

Music Vocabulary—the elements of music

1. **Structure** – chorus verse, bridge
2. **Pitch** – how high or low
3. **Rhythm** – changes in the length of the notes
4. **Texture** – the layers of instruments (how many? Same or different?)
5. **Dynamics** – volume – how loud or soft
6. **Timbre** – the sound different instruments make
7. **Beat** – the pulse of the music

Ostinato—a repeating sound or rhythm, throughout a song

Forte—Loud, **Piano**—soft, **Crescendo**—Getting louder, **Diminuendo**—Getting quieter



Term	Symbol	Value
semibreve		4 beats
minim		2 beats
crotchet		1 beat
quaver		1/2 beat
pair of quavers		1/2 + 1/2 = 1

OTHER KEY FACTS AND VOCABULARY

Latitude and Longitude – Lines of latitude run horizontally between the North/South Poles.

Equator – A horizontal line that runs around the centre of the Earth half way between the North and South Poles.

Northern and Southern Hemisphere – Northern Hemisphere - the part of the Earth located north of the Equator. Southern Hemisphere – the part of the Earth located south of the Equator.

The tropics of Cancer and Capricorn – The most northerly (Cancer) and most southerly (Capricorn) horizontal lines around the Earth at which point the Sun can be directly overhead.

Arctic and Antarctic – The northerly (Arctic) and southerly (Antarctic) regions of the Earth – near to the North and South Poles respectively – where it is typically very cold.



Orbit The curved path of an object around a star, planet or moon, it takes 365 days for the Earth to orbit the sun and 28 days for the moon to orbit the Earth

Axis A straight line from the North to the South Pole that the Earth rotates around every 24 hours

Day is when that part of the Earth is facing the sun and if facing away it is **night**.

Seasons Because the world is on a tilt, some parts of the Earth are leaning closer to the sun (summer) or are leaning away (winter)

